

Woven with Joy: Meet Jenelle Kent of Pieces to Treasure

For Jenelle Kent, the heart behind Pieces to Treasure, creativity has always been stitched into the fabric of her life. "I often think of my journey as a creative thread that's woven itself through every stage," she says—and it's a fitting metaphor. From childhood days spent imagining what bolts of fabric could become, to designing sophisticated collections for Moda, Jenelle's passion for textiles has remained a constant companion.

From the Classroom to the Cutting Table

Jenelle began her professional life as a primary school teacher in coastal New South Wales, Australia, where she lives in MacMasters Beach, about an hour north of Sydney. But it wasn't long before quilting captured her imagination. "I discovered patchwork at a local shop and became immediately hooked," she recalls. The



Jenelle's quilt, Sunwashed PTT 278



Jenelle Kent of Pieces to Treasure

endless color combinations and creative possibilities proved irresistible.

As her family grew, so did her creative ambitions. She began designing children's patterns, eventually opening her own quilt shop. "That's when I realized I'd found my perfect job," she says. That love of teaching never left her—today it lives on in her patterns, tutorials, and videos for quilters worldwide.

Her journey took a dream-come-true turn when she began designing fabric for Moda. "It's been the most rewarding journey, and one that I'm still constantly learning and growing through."

A Love for Wovens

Known for her refined yet approachable style, Jenelle has carved a unique niche through her use of wovens and Moda toweling. "Woven stripes became a foundation for

many of my designs," she explains. "They lend themselves to a myriad of possibilities, and designing with them is a joy."

Her latest collection for Moda, Summer Solstice, embodies that joy in every thread. Inspired by the soft, golden light of late summer days, the line features deep sea blues, sun-washed waterfall shades, and pops of citrusy yellow. "It's familiar but with a twist of sunshine," she says. Classic stripes and gingham anchor the line with timeless charm, while new explorations in light and shadow add depth and dimension.

A particular standout for Jenelle? "The soft waterfall blue and canary yellow stripe—it's cheerful and sun-washed," she says. And for versatility, she loves the trio of larger gingham checks: afternoon, waterfall, and nautical blue.

Patterns With Purpose

When it comes to pattern design, Jenelle strikes a beautiful balance between style and functionality. "Designing with Moda toweling is particularly exciting because it brings functionality to the forefront," she says. Geometry plays a big role too—an element that speaks to her inner "geometry nerd."

The Summer Solstice patterns reflect her signature approach: timeless yet fresh. From the applique beauty of the Limoncello Spritz runner to the restful elegance of Sunwashed and Woven Blooms quilts, each piece is thoughtfully crafted to inspire creativity and joy.

Looking Ahead

Now that her shop has closed, Jenelle is embracing new opportunities to design,



Jenelle's quilt, Starstruck PTT 280

create, and connect. "I plan on showing the versatility of Moda toweling and wovens—how they can be combined with prints or used alone to make truly beautiful and practical projects," she says. She's also creating more video tutorials and blog content to share her expertise and spark new ideas for quilters everywhere.

When she's not stitching, Jenelle enjoys gardening, walking, home renovating, and even playing piano in a swing band. "I'm very fortunate to be surrounded by my family and rescue cat," she says, "and to be able to share my love of fabric and design with stitchers all over the world."

Connect with Jenelle Kent:
Instagram: @piecestotreasure
Website & Blog: piecestotreasure.com
YouTube: <https://www.youtube.com/@piecestotreasure4673>

Summer Solstice

Wovens and 18" wide Towelings

Pieces TO Treasure
BY JENELLE KENT

Featuring a serene palette of sun-washed yellow and tranquil, coastal blues, Summer Solstice brings the warmth and ease of sun-drenched afternoons to life.

This collection of wovens and toweling invites you to slow down, breathe in the season, and create with a sense of calm, capturing the essence of slow summer days.

This line is perfect for creating timeless pieces that feel like a summer daydream. Let each project invite you to create with a sense of calm while reflecting on the simple beauty of summer.

moda **MARCH DELIVERY**



PS12224
Foldie Holdie Bag 9" x 8" x 3"

Summer Solstice Wovens

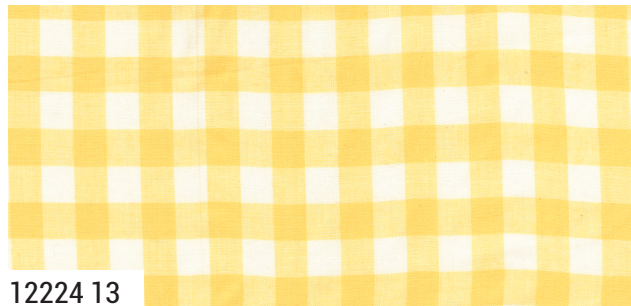
Pieces ^{to} Treasure
BY JENELLE KENT



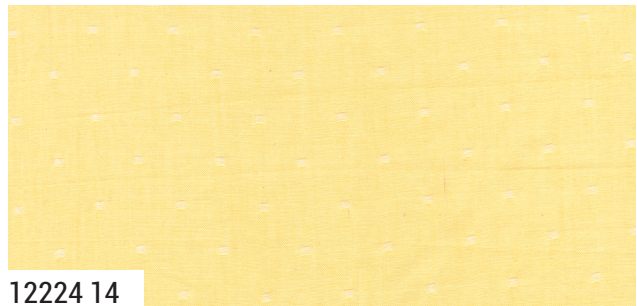
12224 26



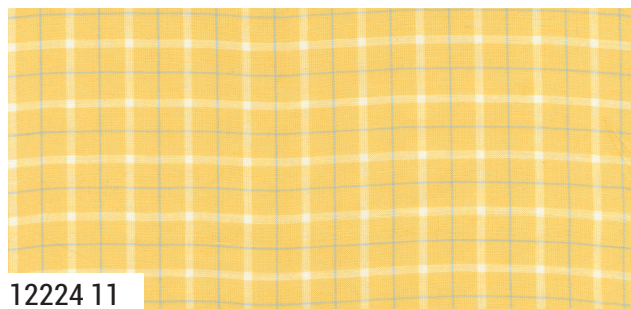
12224 17



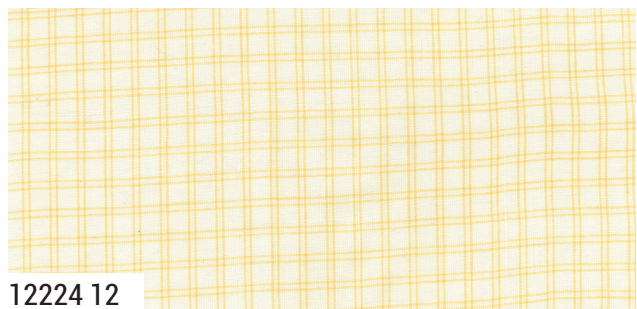
12224 13



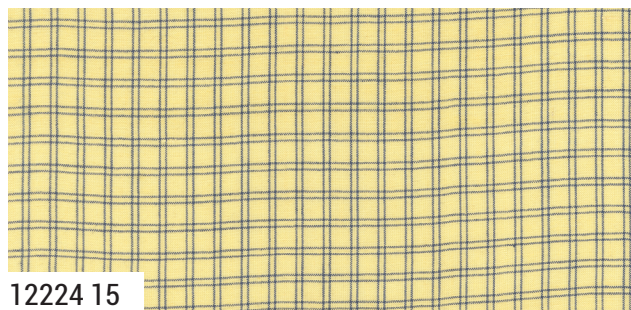
12224 14



12224 11



12224 12



12224 15



12224 16

moda MARCH DELIVERY

Summer Solstice Wovens

Pieces ^{TO} Treasure
BY JENELLE KENT



12224 18



12224 22



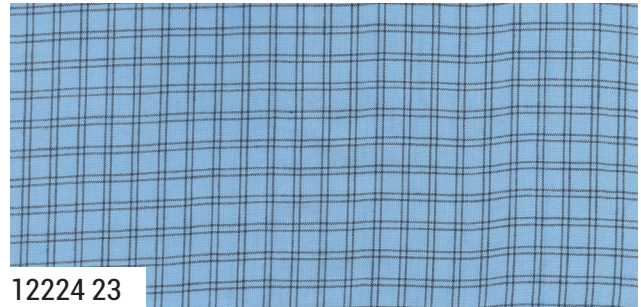
12224 19



12224 20



12224 21



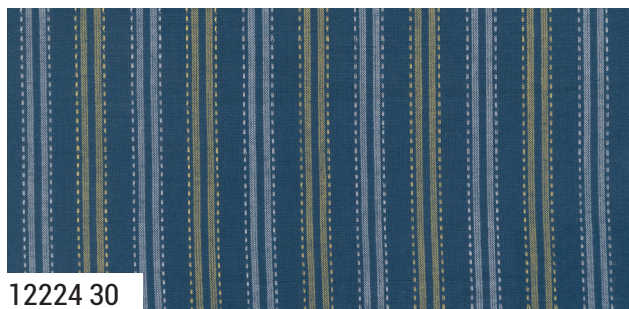
12224 23



12224 28



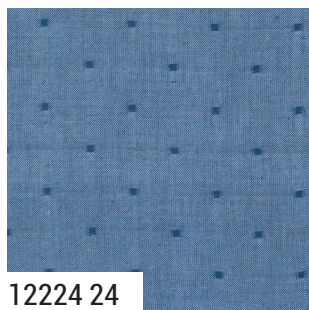
12224 29



12224 30



12224 31



12224 24



12224 25



12224 27



12224 32

12224

Asst.
12

AB

LC

PP

PS

KIT

MARCH DELIVERY

•22 Prints •100% Premium Cotton Wovens
AB includes all 22 skus. LCs & PPs include 22 skus with two each of 12224-11, 13-16 & 18-32.

Summer Solstice

18" wide Towelings

Pieces TO Treasure

BY JENELLE KENT



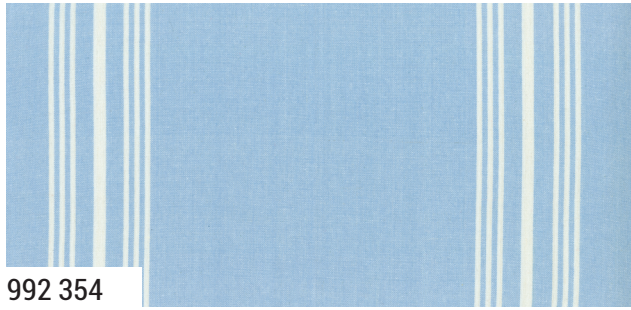
992 350



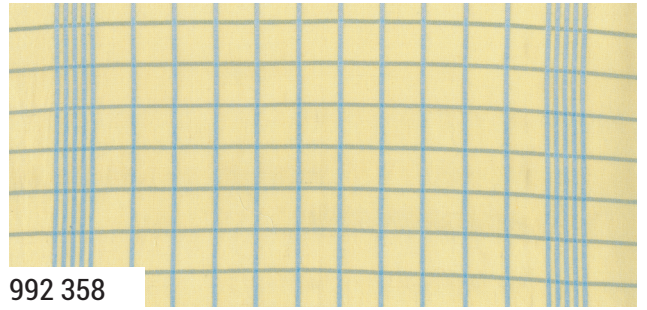
992 351



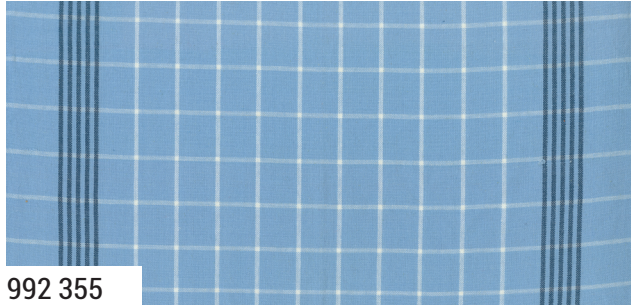
moda MARCH DELIVERY



992 354



992 358



992 355



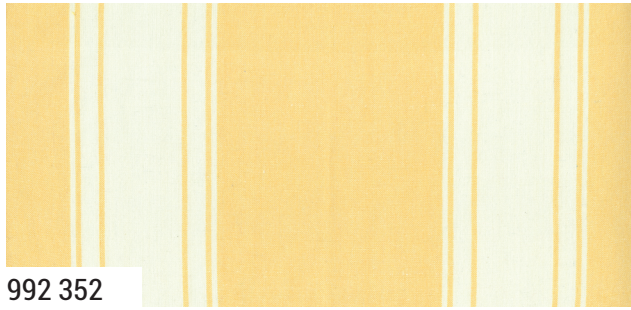
992 356



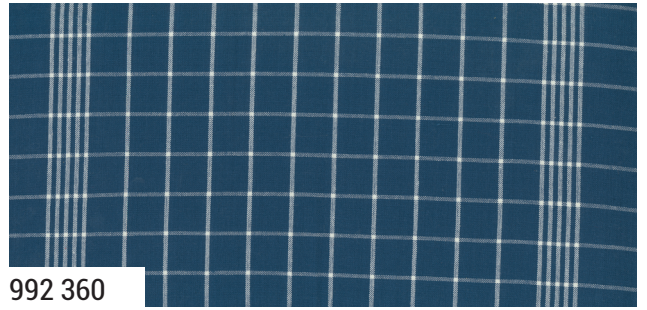
992 353



992 359



992 352



992 360



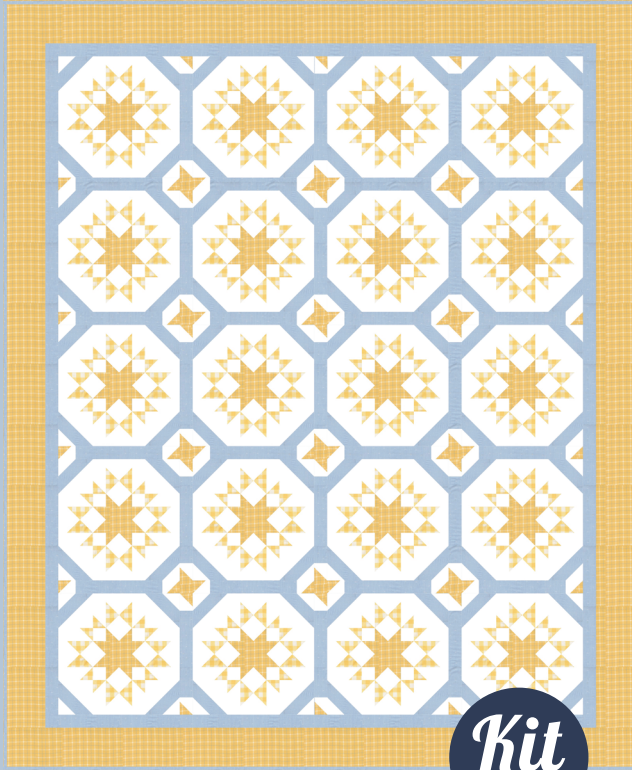
992 357



992 361

992 •12 18 Inch Wovens •100% Premium Cotton Toweling MARCH DELIVERY

Summer Solstice Pieces to Treasure
BY JENELLE KENT

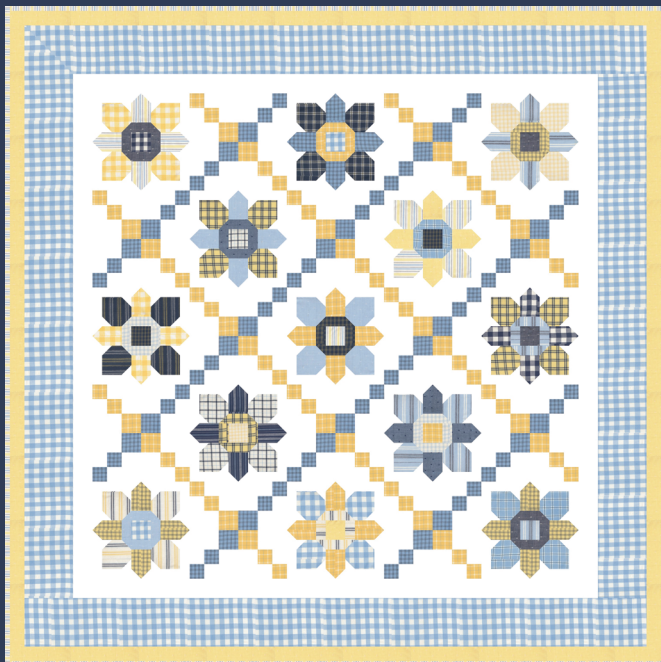


PTT 278 Sunwashed 74" x 88"

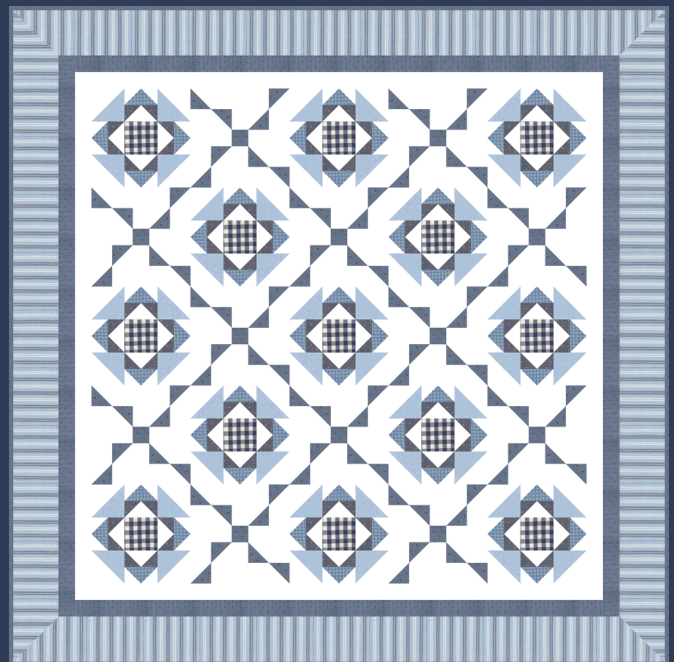
Kit
12224



PTT 277 Nocturne 61" x 81" LC Friendly



PTT 279 Woven Blooms 68" x 68" LC Friendly
Also available in a dark colorway



PTT 281 12 Bar Blues 80" x 80"

Summer Solstice Pieces ^{TO} Treasure
BY JENELLE KENT



PTT 283 Knit Happens
Needle Roll 24" x 16"
Knitting Bag 18" x 11" x 9"



PTT 284 Gather & Go Bag 8" x 7" x 4"



PTT 280 Starstruck 84" x 84" AB Friendly



PTT 282 Limoncello Spritz 50" x 18" PP Friendly
Additional colorways available