

# GROWING BEAUTIFUL



© by CRYSTAL  MANNING

FEBRUARY 2019 DELIVERY

"begin your journey today..."



pattern by Indygo Junction Designs  
IJ 1151E / IJ 1151EG  
Shiff Dress



pattern by Olive Ann Designs  
OAD 97 / OAD 97G  
Rose

Painterly flowers are complemented with abstract patterns in Growing Beautiful, a vibrant new collection suited for garments and quilts. There is a peony print – one of my springtime favorites – and a field of wildflowers, all painted in a bold palette of reds, berries, eggplant, teal and a pop of chartreuse. There are four Growing Beautiful prints on Rayon, it's lovely drape is perfect for dresses, shirts and skirts.

Growing Beautiful is for everyone looking to add a little color and style to their life.



11832 17



11837 11



11835 14



11834 12



11831 11



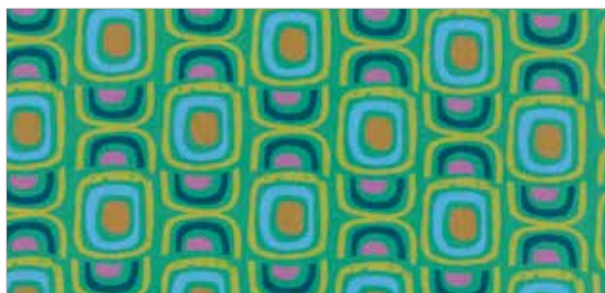
pattern by *Crystal Manning*  
CMA 865 / CMA 865G Strawberry Rhubarb Size: 72" x 84"



11835 15



11830 11



11833 13



11836 11



11830 13



11832 13



11835 13



11836 13



11833 11



11831 12



11836 12



11837 15



11830 15



11835 11



pattern by Crystal Manning  
CMA 864 / CMA 864G  
Penny Lane Size: 64" x 64"



11830 12



11833 14



11831 13



11834 11



11837 12



11832 16

# GROWING BEAUTIFUL RAYONS

54" WIDE 100% RAYON



11830 15R



11830 11R



11831 12R



11831 11R

11830

Asst. 15

Asst. 8

• 25 Prints - 100% Premium Cotton Prints • 4 Rayon Prints - 100% Rayon  
Assortments do not include Rayon Prints.